

Coatimundi

Scan for more
information



Species Description

Scientific name: *Nasua nasua*

AKA: Coatis, Coatis-mondis

Native to: South America

Habitat: Forest and grassland

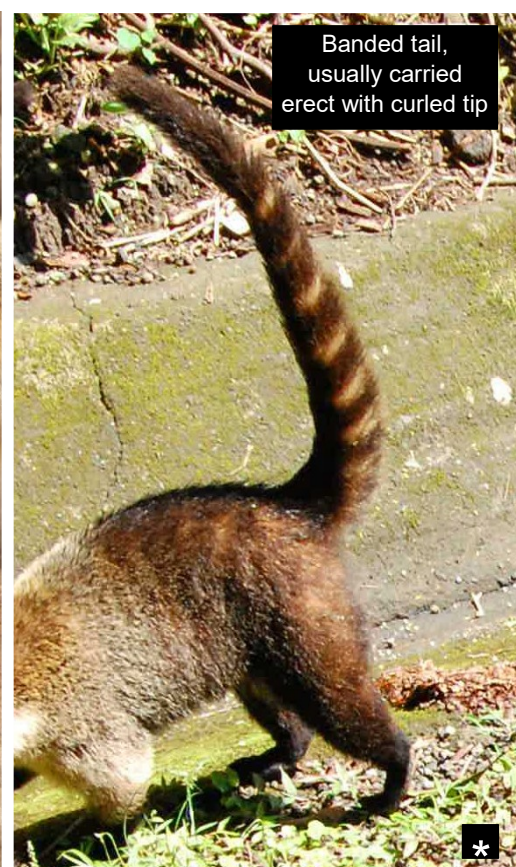
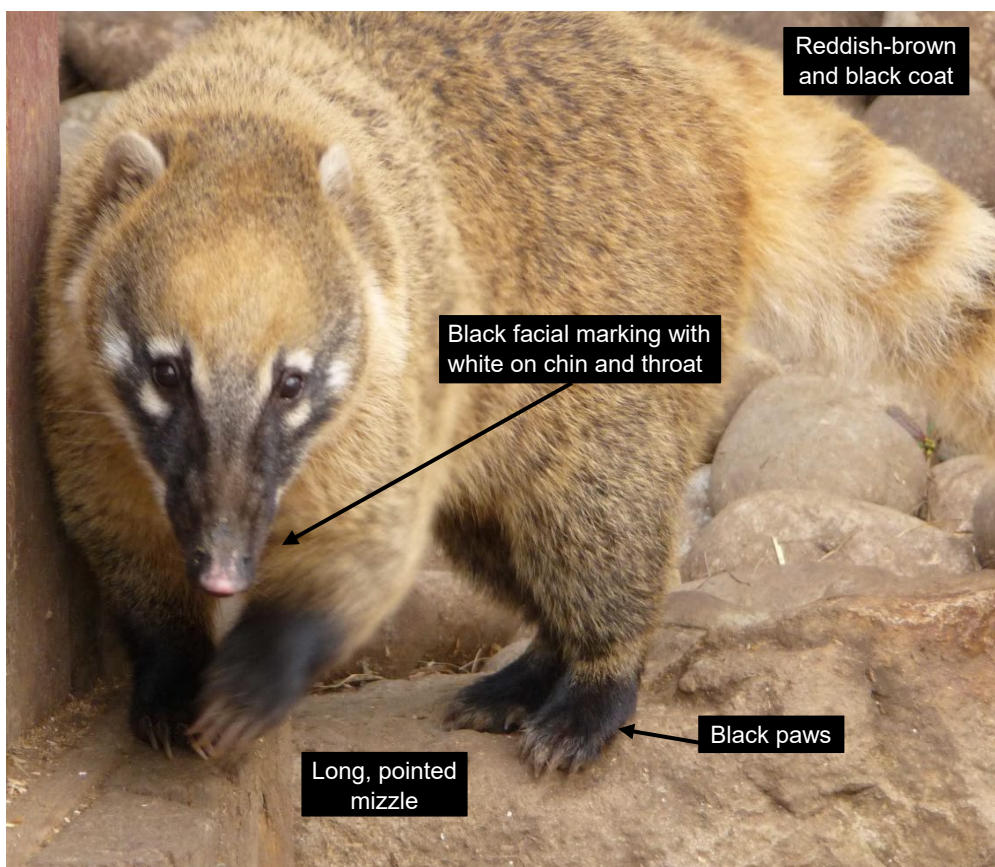
Coatimundi are similar in size to a small dog, weighing up to 5.5 kg and the head-to-tail length ranging from 80 to 130 cm with a little more than half the length being tail. It has short forelegs, long hind legs, black feet, a pointed snout with black facial markings and a distinctive long, banded tail. It has a harsh red-brown and black coat which lightens to yellow-brown on the underparts. Coatimundi walk with a bear-like gait.

Nasua nasua spend much of their time in trees, retiring to them for sleep and spending some of their foraging time looking for fruit. Coatimundi are not present in the wild in Northern Ireland.

Under the Invasive Alien Species (Enforcement and Permitting) Order (Northern Ireland) 2019 it is offence to intentionally keep; breed; transport to, from or within Northern Ireland, use or exchange Coatimundi; or to release it into the environment.



Key ID Features



* Coati swarm by i / f / photos, Creative Common BY-ND <http://www.flickr.com/photos/good-karma/401110526/sizes/o/>

Report any sightings via; CEDaR Online Recording - <https://www2.habitas.org.uk/records/ISI>, iRecord app or Invasive Species Northern Ireland website - <http://invasivespeciesni.co.uk/report-sighting>

Identification throughout the year

The coat colour of the coatimundi does not vary throughout the year.

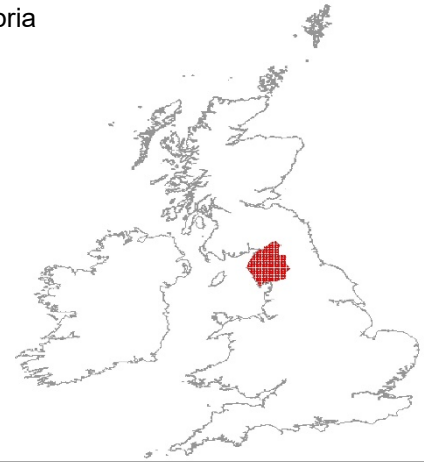
Field Signs

Coatimundi tracks show five long toes around a central pad. Their droppings are 7 -15 cm long and up to 2.5 cm in diameter.



Distribution

Although Coatimundi is not present in Northern Ireland, a wild population is known to reside in Cumbria



Source: Various

Similar Species

Badger

Native
(*Meles meles*)

Body length
75 - 90 cm

Short tail
with white tip

Low to
ground,
short limbs

Fur is grey
to black

Black and white
face markings

No bands
on tail



Coatimundi

Invasive non-native
(*Nasua nasua*)
For comparison



Coati by Olivier Duquesne, Creative Common BY-SA
<http://www.flickr.com/photos/daffydude/3644277763/sizes/o/>

Red Fox

Native
(*Vulpes vulpes*)

Ears erect and pointed
with black backs

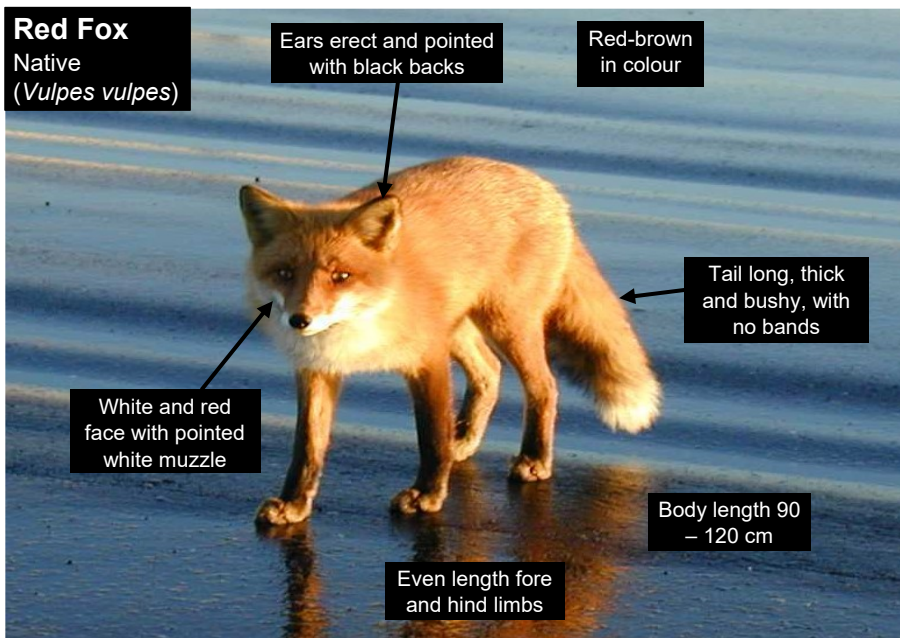
Red-brown
in colour

White and red
face with pointed
white muzzle

Tail long, thick
and bushy, with
no bands

Body length 90
– 120 cm

Even length fore
and hind limbs



References and further reading:

Nowak, R M (editor) (1999) "Walker's Mammals of the World" Volume 2, 5th edition. John Hopkins University Press
Brown, R, Lawrence, M J and Pope J (2004) "Animals Tracks Trails and Signs" Hamlyn
MacDonald, D and Barrett, P (1993) "Mammals of Britain and Europe". Collins
Photos from: Danial Winchester, j / f / photos, Olivier Duquesne

Sustainability at the heart of a living, working, active landscape valued by everyone.

Adapted for Northern Ireland
Environment Agency 2020