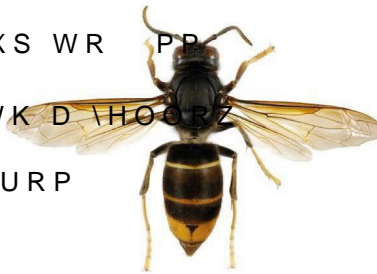




**Asian hornet (*Vespa velutina*) for comparison**

x 4XHHQ XS WR PP ORQJ ZBQHU XS WR PP  
x /HJV \HOORZ QG W WKH  
x 'DUN EURZQ EODFN DEGRPHQ ZLWK D \HOORZ  
EDQG RQHJPKHQW  
x +HDG GDUN IURP DERUHRQW DQJH IURP  
x 'DUN FRORQW HQQDH  
x (QWLUHO\ EODFRUHQ \OYHW\  
x 1HYHU DFOVJHW DW



4 5R

**6LPLODU 6SHFLHV**

**Common wasp - Queen (*Vespula vulgaris*)**

x 4XHHQ SSUR[ PP LQ OHQJWK  
x \$QFKRUDSHG PDUN RQ IDFH  
x /HJV \HOORZ  
x %ULJKW \HOORZ DQG EODFN EDQGLQJ DORQJ WKH ERG\  
x +DV DQ REYLRXV 'ZDLVW' EHWZHHQ WKRUD[ DQG DEGRPH  
x %ODFNWHQQDH  
x %ODFN GRWV RQ DEGRPHQ



7KRPDV 3F

JDLOKDP

**Giant woodwasp (*Urocerus gigas*)**

x /DUJHU WKDQ \$VLDQ KRUQHVRQIHPDOH XS WR PP  
x /HJV \HOORZ  
x 'LVWLQFWLYH \HOORZDEGRPHQ EODFN EDQGHG  
x /RQB\OLQGULFDO ERG\ XQOLNH \$VLDQ KRUQHW ZKLFK  
DQ REYZLXWW  
x /RQJ \HOQRZHQQDH  
x )HPDOH KDV DQ REYLRXV DSSHQWLOH  
RYLSRVLWURU ZKLFK LW UXVHW



4 5R

**Hornet mimic hoverfly (*Volucella zonaria*)**

x \$EGRPHQ KDV PRUH \HOORZKRUQHW HV WKDQ \$VLDQ  
x /HJV GDUNHU WRDQSHVLDQ  
x 2QO\ RQH SDLU RI ZLQJV KRWRWV DQG ZDVSV KDYH  
SDLUV  
x /DUJH JOREXODU H HV



'LGHVFRXHQV

\$OYHVJ

**Median wasp (*Dolichovespula media*)**

x 0RUH H[WHQVLYH \HOORZ DQG RUDQJH FRORXUDWLRQ RQ  
DEGRPHQV DPHQWV WKDQSHVLDQ  
x <HOORZ PDUNLQJV RQ WKRUDHWXQOLNH \$VLDQ



© Q. Rome

4 5RPH

**)LHOG 6LJQV**

\$FWLYHRSUPEHU SHDN \$XJXVW 6HSHWPEHU 0DWHG TX  
JURXSV LQ YDULRXVPODGHXUDDEBHQDQHDWK WUHH ED  
OHIW E\ EHHWOH ODUYDH LQSRVHQVQLBHQDQVSDOV  
UHIXDQHV YHU\ ODUJH QHVWV LQ WDOO WUHHV LQ XUE  
RI FRQLIHUV :POGHXWVBEQWXUHV JDUDJHV VKHGV HW



If you are a beekeeper living in Northern Ireland you can [register your apiary here](#) - it will assist us to circulate information quickly to beekeepers if you are already registered at the time of an invasion.