

Asian Hornet Nest Identification

Asian hornets produce two types of nest, primary and secondary:

Asian hornet,
Vespa velutina

Primary nests:

- Spherical with a small entrance hole at the base, usually 5 to 10 cm in diameter
- Built in spring by a lone Asian hornet queen, usually in a protected place such as brambles, a hedgerow, or in / on a building
- **Common wasp nests and Asian hornet nests can look similar, only report nests if seen with Asian hornets. To identify a nest, watch for insects from a safe distance**



Secondary nests:

- Pear-shaped, entrance hole halfway up the nest, up to 60 cm wide x 80 cm tall
- Usually found in trees, may also be in buildings and hedges
- **Use binoculars to identify nests from a safe distance. Do not disturb suspected nests and retreat from any wasp / Asian hornet nests if flying insects are observed**

Secondary nests in a tree canopy in summer (left)



Primary Asian hornet nest. Only report if seen with Asian hornets.



Secondary nest in a hedge



Secondary nest in a building



Alert! Report sightings of Asian hornet and suspected nests via:

Asian Hornet
Watch App

CEDaR Online
Recording

iRecord
App

Invasive Species
NI Website

Contact the NIEA
Invasive Non-Native
Species Team



Email:
invasivespecies@daera-ni.gov.uk

Tel: 028 9056 9558

Apple

Android

All image credits. Tree image adapted from: Trees in a hedgerow by Marathon, CC BY-SA 2.0 <<https://creativecommons.org/licenses/by-sa/2.0/>> via Wikimedia Commons. Asian hornet primary and winter nest images: John de Carteret - Jersey. Secondary Median wasp nest image: Sarah Smith / A Euro- wasp nest - Pendomer, CC BY-SA 2.0 Generic, via Wikimedia Commons. Primary Median wasp image: Karen McCartney. Common wasp nest image: David Jones. Other nest and insect images: Crown Copyright.

Nests and objects that look similar

Primary and secondary Asian hornet nests may be confused with common wasp nests or objects in trees. If you suspect you have seen an Asian hornet nest, please use binoculars to check from a safe distance before reporting. See overleaf for details of where to report nests and how to get help with identifying a potential nest.

Asian hornet, *Vespa velutina*

Secondary nest:

- Usually found in trees, may also be in buildings and hedges
- Pear-shaped
- Entrance hole halfway up the nest
- Up to 60 cm wide x 80 cm tall



Secondary nests found in trees



Secondary nest found in a boat



Secondary nest found in the eaves of a house

Other objects in trees

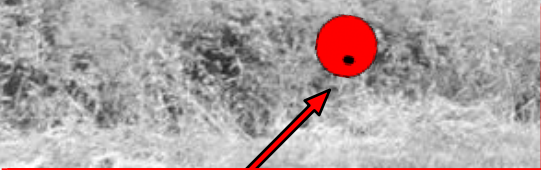
- Crow and magpie nest
- Mistletoe
- Squirrel dreys



Common wasp, *Vespula vulgaris*

Nest:

- Usually on or in the ground, or in confined spaces in buildings
- Round to conical
- Small hidden opening at the lower end
- Usually 30 x 35 cm



Asian hornet, *Vespa velutina*

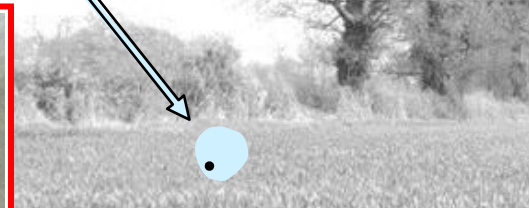
Primary Nest:

- Much smaller than secondary nests
- Inconspicuous
- Spherical, 5-10cm in diameter with entrance hole at base
- Usually found in protected places like brambles, hedgerows or in/on buildings

Some common wasp nests and Asian hornet nests can look similar, only report nests if seen with Asian hornets.



Primary nests inside buildings



Primary nest on a building, with queen