



NPWS

An tSeirbhís Páirceanna
Náisiúnta agus Fiadhúlra
National Parks and Wildlife
Service

Government of Ireland response to the Asian Hornet August 2025

Killer Wasps!



Wasp Killers!



- Predator of honeybees, wasps, other pollinators, including bumblebees, hoverflies and spiders, which it uses primarily to feed its larvae.
- Disruptions to pollinator populations may have serious impacts on biodiversity and pollination services.

1 August - Asian Hornet sighting verified

- First report received in NBDC
- Reporter contacted to confirm bona fides of the picture
- Entomologists from NMI and NPWS examined the photo and are satisfied that It is *most likely* a worker hornet.



6 August - Mobilisation

- Asian Hornet Management Group convened
 - NPWS; NBDC; DAFM; NMI; UK expert support.
- Conservation Rangers on site
 - Supported by experts from NBDC and NMI
 - Cork City Council Biodiversity Officer
 - Traps deployed, Fliers circulated to local residents and businesses.
- Beekeepers alerted
- Media informed
- At this stage there is no evidence of a hornet nest or any other hornet activity in the vicinity of the original sighting



Asian Hornet (*Vespa velutina*)

Asian Hornet (*Vespa velutina*)

Size: Medium (2-3 cm)

Colour: Body black, tail orange-tipped

Irish Status: Non-native / alien invasive



Most Commonly Confused Native Species

Giant Woodwasp (*Uroceras gigas*)

Size: Very large insect (5+ cm)

Colour: Yellow & black

Other: Tail with long ovipositor

Irish Status: Native & widespread



Common Wasp (*Vespula vulgaris*)

Size: Small (1-2 cm)

Colour: Yellow & black

Irish Status: Native, widespread & common



Other Commonly Confused Native Species



Drone Fly
Eristalis tenax



Birch Sawfly
Cimbex femoratus



Spotted Longhorn
Rutpela maculata



Honeybee
Apis mellifera



Giant Horsefly
Tabanus sudeticus

Monitoring – mid august

- Bait stations deployed and monitored on a daily basis
- Local Beekeepers monitoring & inputting
- Little evidence at first....
- ...one animal captured 12 August
- more sightings and trapping

Further sightings indicate that there may be a nest in the locality

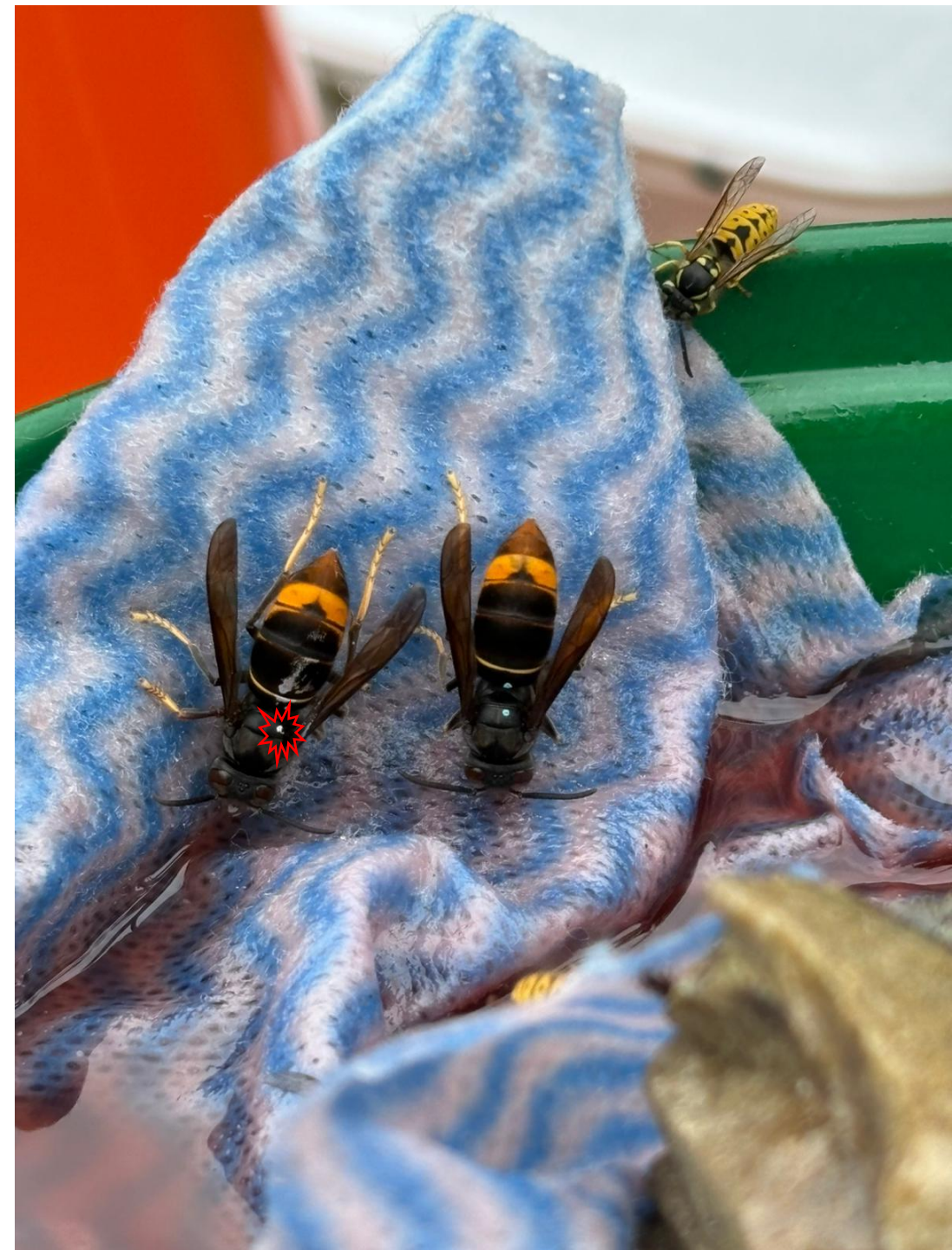






Track and Trace phase

- Bait stations replaced with monitoring stations
- Local Beekeepers assisting
- Old-fashioned marker and tinsel methods used
- **27 August Success!**





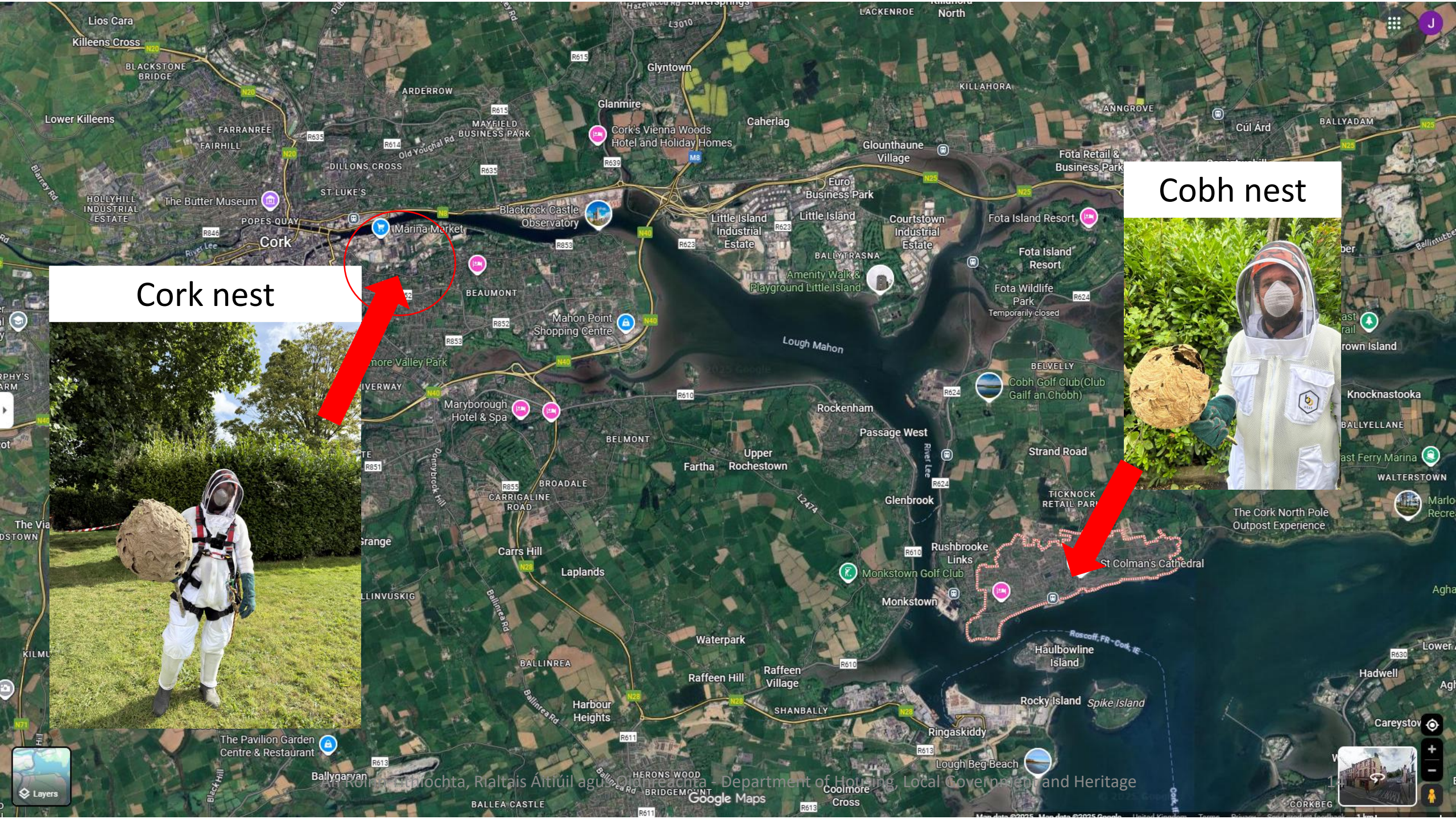
Control and removal

The nest is located 19 metres up a tree in a private garden

- Health & Safety protocol developed
- Hard Hat site
- Irish Pest Control Association
- Tree Surgeon
- UK APHA expert on site

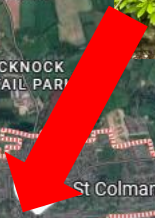






Cork nest

Cobh nest



Success Factors

- Identification and notification to invasives.ie;
- Immediate inter-agency response;
- Immediate on-the-ground response;
- Stakeholders working with the team;
- Positive media interest;
- Public fascination;



Next steps

- 1 November – Webinar
- 11 November - AHMG Technical workshop
 - Lessons learned
 - Protocol for next time
- 28 November Stakeholder Forum
 - Outline the protocol
 - Seek input and collaboration from beekeepers

Questions?

www.invasives.ie